

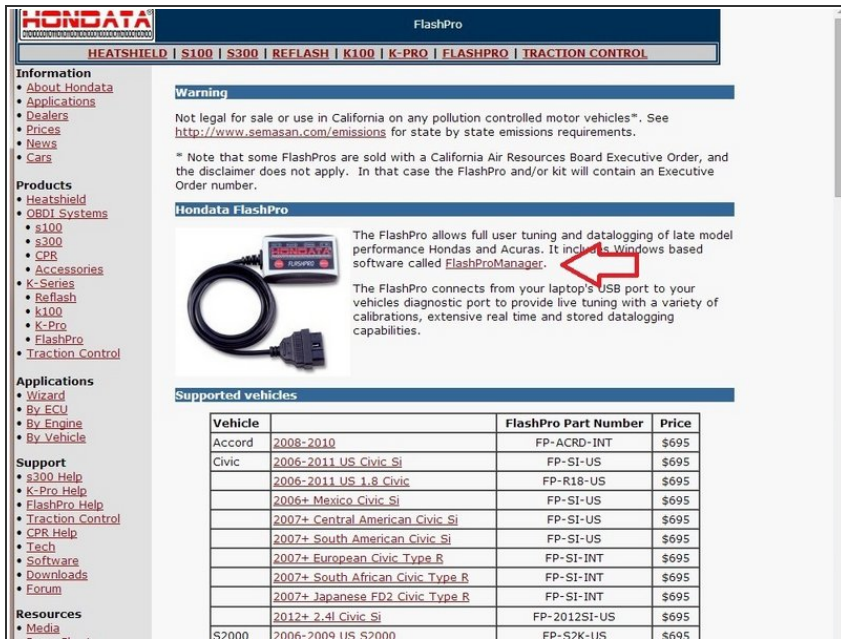


Hondata FlashPro Install

Written By: Hybrid Racing



Step 1 — Hondata FlashPro



Hondata FlashPro

HEATSHIELD | S100 | S300 | REFLASH | K100 | K-PRO | FLASHPRO | TRACTION CONTROL

Information

- About Hondata
- Applications
- Dealers
- Prices
- News
- Cars

Products

- Heatshield
- OBID Systems
- S100
- S300
- CPR
- Accessories
- K-Series
- Reflash
- K100
- K-Pro
- FlashPro
- Traction Control

Applications

- Wizard
- By ECU
- By Engine
- By Vehicle

Support

- S300 Help
- K-Pro Help
- FlashPro Help
- Traction Control
- CPR Help
- Tech
- Software
- Downloads
- Forum

Resources

- Media

Warning

Not legal for sale or use in California on any pollution controlled motor vehicles*. See <http://www.semason.com/emissions> for state by state emissions requirements.

* Note that some FlashPros are sold with a California Air Resources Board Executive Order, and the disclaimer does not apply. In that case the FlashPro and/or kit will contain an Executive Order number.

Hondata FlashPro

The FlashPro allows full user tuning and datalogging of late model performance Hondas and Acuras. It includes Windows based software called **FlashProManager**.

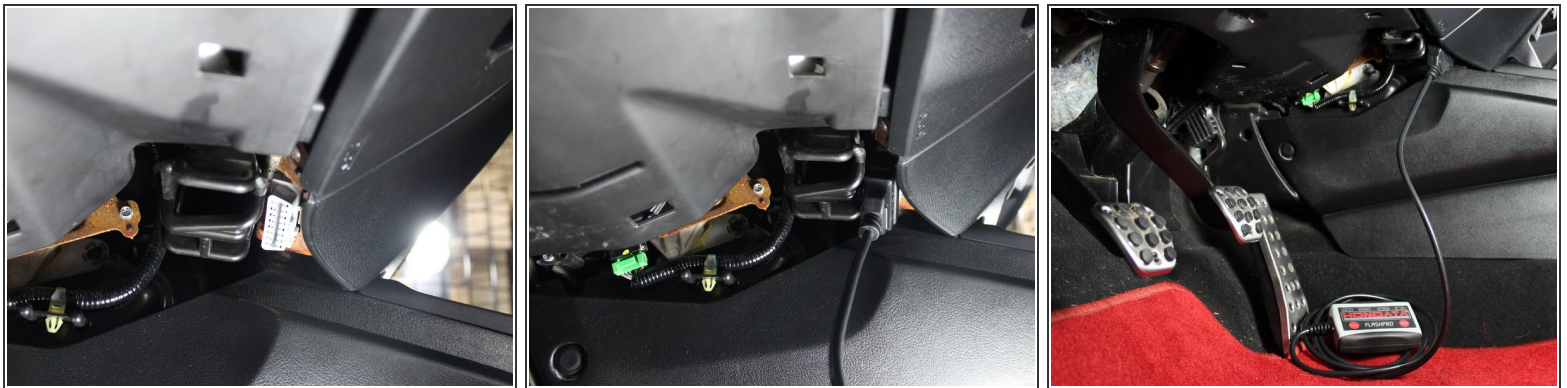
The FlashPro connects from your laptop's USB port to your vehicles diagnostic port to provide live tuning with a variety of calibrations, extensive real time and stored datalogging capabilities.

Supported vehicles

Vehicle	FlashPro Part Number	Price
Accord 2008-2010	FP-ACRD-INT	\$695
Civic 2006-2011 US Civic Si	FP-SI-US	\$695
2006-2011 US 1.8 Civic	FP-R18-US	\$695
2006+ Mexico Civic Si	FP-SI-US	\$695
2007+ Central American Civic Si	FP-SI-US	\$695
2007+ South American Civic Si	FP-SI-US	\$695
2007+ European Civic Type R	FP-SI-INT	\$695
2007+ South African Civic Type R	FP-SI-INT	\$695
2007+ Japanese FD2 Civic Type R	FP-SI-INT	\$695
2012+ 2.4i Civic Si	FP-2012SI-US	\$695
S2000 2006-2009 US S2000	FP-S2K-US	\$695

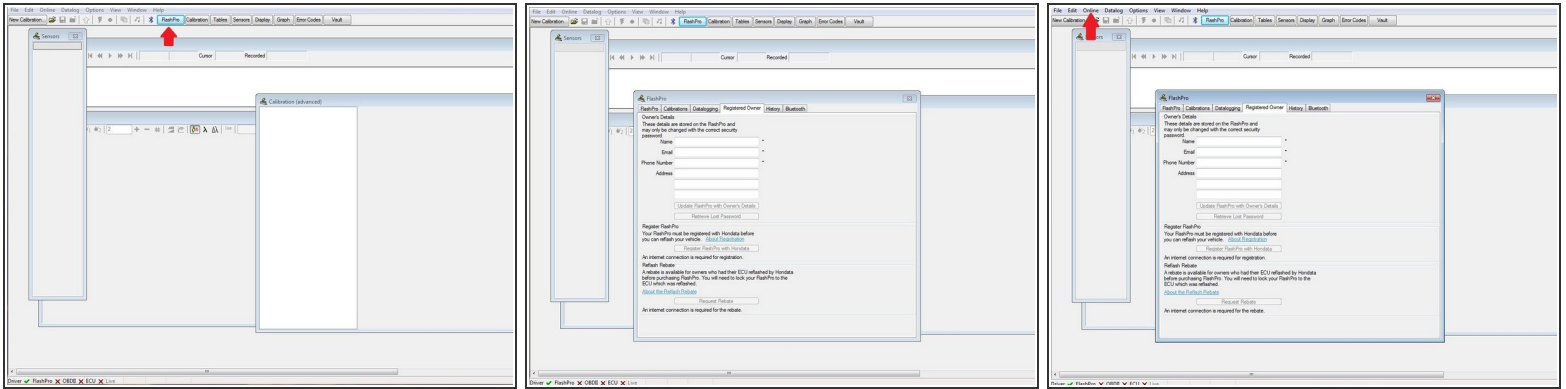
- Begin by going to [Hondata.com](http://hondata.com) and downloading the latest version of Flashpro Manager.
- Click on the Flashpro manager link on the Flashpro page to start the download.
- <http://hondata.com/flashpro.html>

Step 2



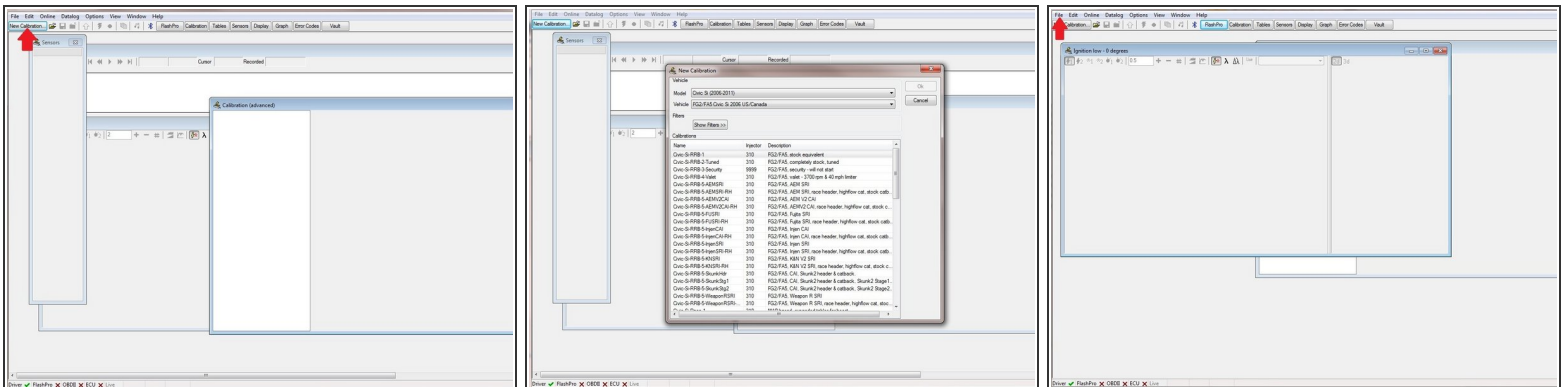
- Locate the OBD2 port below the dashboard on the driver side.
- Plug your Flashpro into the port.
- Switch on the ignition but do not start the engine. *This will send the vehicle information to the Flashpro that you will need to lock the Flashpro to your ECU.*

Step 3



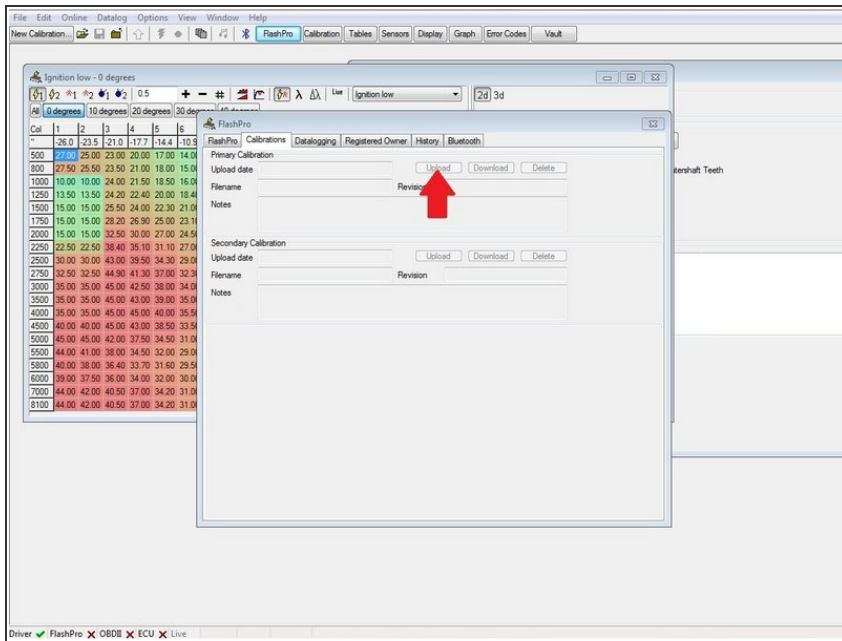
- Plug your Flashpro into your computer with the supplied USB cord. *Driver installation may be required.*
- Click on the Flashpro button at the top of the Flashpro manager. This will open up the window to fill out information to register with Hondadata.
- Click the **Online** button at the very top of the Flashpro manager window. This will open a drop down box for you to select to lock your Flashpro to your vehicle.

Step 4



- Select the New Calibration button at the top to open a calibration.
- Select your model and vehicle information.
- Select a calibration based on your engine modifications
- Go to the File tab at the top left of the window, save/ name the calibration you have selected.

Step 5



- Upload your calibration to your Flashpro by selecting the Flashpro button on the Flashpro window.
 - Unplug your Flashpro from your computer.
 - Flash the calibration onto your vehicle.
- ⚠ Plug the Flashpro into the OBD2 port with the ignition switched on but the engine is not running. Hold down the program button for 3 seconds and then release. The program light will flash for 1 minute and 30 seconds while the calibration is uploaded. The light will stop flashing once the calibration is completely uploaded.**
- You have successfully installed your Flashpro and uploaded a basemap calibration!