



# Hybrid Racing Alcantara Shift Boot (17-21 Civic)

Use this as a guide to install your Hybrid Racing Alcantara shift boot into any 17-21 Honda Civic with a manual transmission.

Written By: David Cordell



## INTRODUCTION

Important!! Please read the entire install guide twice before starting your installation. No really, it's a good idea to read it twice before you begin so everything goes smooth.



### TOOLS:

- [#2 Phillips head screwdriver](#) (1)
- [Plastic Panel Removal Tools](#) (1)
- [Needle Nose Pliers](#) (1)
- [Heavy Duty Stapler](#) (1)



### PARTS:

- [HYB-SBA-01-01 or HYB-SBA-01-02](#) (1)

## Step 1 — Shift Knob Removal



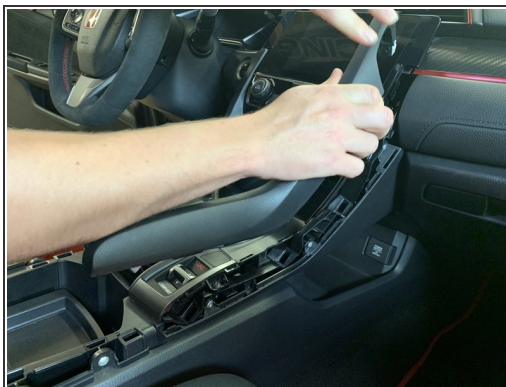
- Remove your shift knob.
- Remove the boot collar by pushing downward on the clip.
- Use a 14mm Open End Wrench to unscrew the threaded section of the collar. Some may require tools to remove, be careful not to damage the threads.

## Step 2 — Console Removal



- Pull upwards on the side console pads and remove them.
- They aren't screwed or bolted into place so just pull up and they will pop out.

### Step 3 — Console Removal



- Use a plastic panel tool to pry the upper console section. Once it pops up, grab the upper section and pull it towards you.
- These panels are held in with clips and do not require tools.
- Pop both left and right upper sections off.

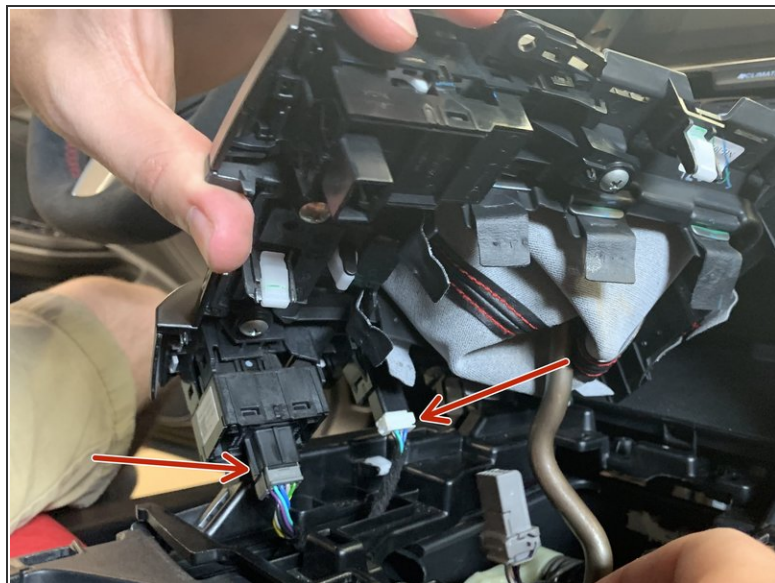
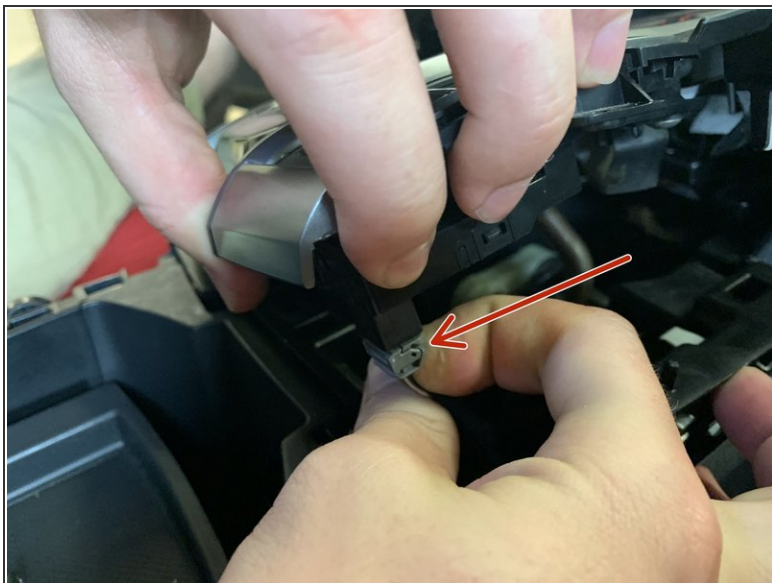
### Step 4 — Remove the Console Cover



- Using a #2 phillips screwdriver, unscrew the two screws that hold the shift boot cover.
- Use your hands and pry the sides of the cover up and pop it off.

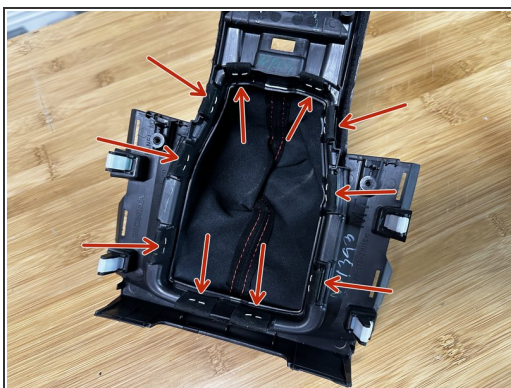
**⚠ Don't pull on it too hard because there are electrical connectors holding it in place.**

## Step 5 — Unplug Drive Mode Harness



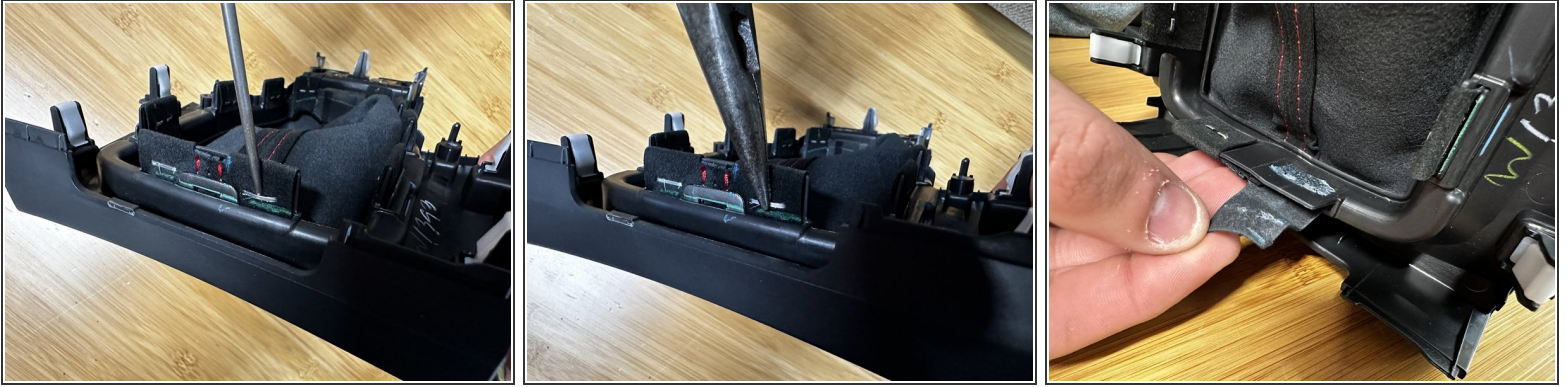
- Unplug the drive mode selector as well as the parking brake and brake hold button.
- ❗ Depending on the year/model you may have more or less buttons to unplug here.
- Remove the center console cover and place it on a clean workspace.

## Step 6 — Shift Boot Removal



- Locate the shift boot fabric on the inside section of the console cover. The factory fabric is attached with staples and tape.
- You must remove all of the staples before you are able to remove the shift boot.

## Step 7 — Shift Boot Removal



- Use a thin pick or flat tipped screwdriver and pry the staples outward.
- Once you have space, you can use a pair of needle nose pliers to pull them out. Remove all of the staples.
- There are 10 staples in total.
- Once the staples are removed, you can peel the fabric off the tape.

## Step 8 — Shift Boot Removal



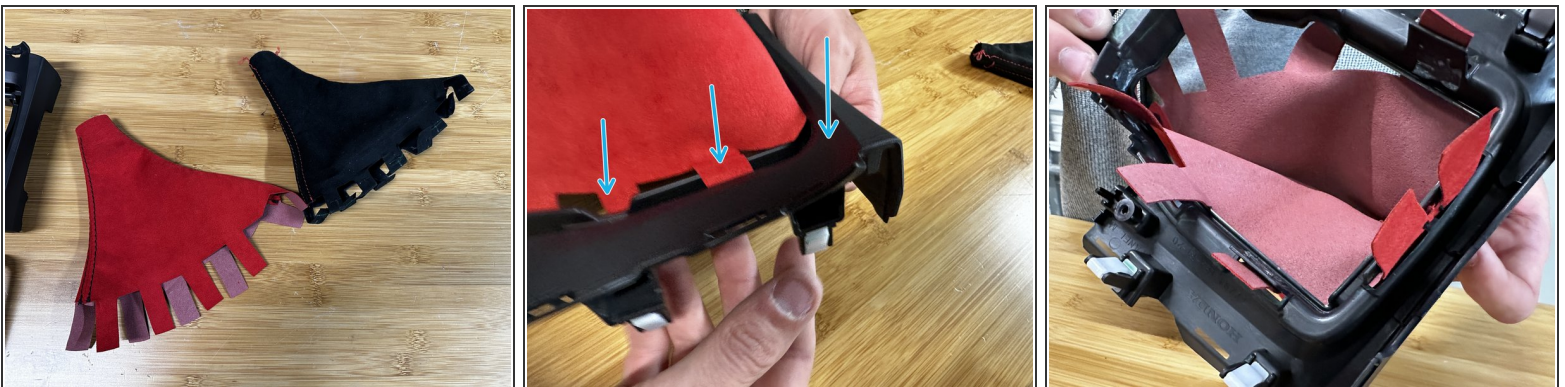
- Flip the console cover over and pull the factory fabric out. It should slide out easily.

## Step 9 — Remove Trim Ring



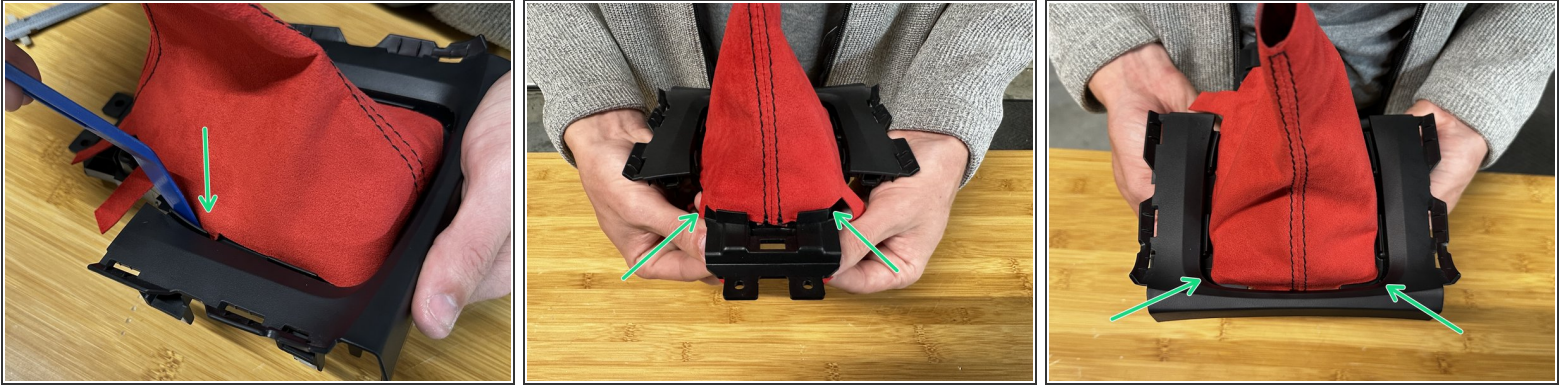
- You can now remove the trim ring from the console cover. Depress the tabs and push the ring out.

## Step 10 — Install Shift Boot



- Take the Hybrid Racing shift boot and insert the ears through the OE slots in the console cover.
- The fabric doesn't need to fit super tight, it just needs to sit in place with all of the tabs through the plastic.

## Step 11 — Install Shift Boot



- Use a trim tool, pick or flat screw driver and push the fabric through the trim. Make sure the boot is spaced evenly.
- ⓘ Make sure the fabric covers all corners before installing the silver trim ring.

## Step 12 — Install Shift Boot



- Reinstall the silver trim ring and clip it into place. Make sure all the fabric tabs are in place, and there are no gaps in the corners.
- Install silver trim working from front to back of the bezel.

## Step 13 — Secure Shift Boot



- Use a general-purpose stapler to secure the fabric to the factory plastic tabs. Small staplers work great since they are easy to hold and maneuver.
- You can also use double sided tape to secure it, but the stapling method is the most durable.

## Step 14 — Finished!



- You can now reinstall the console cover. Be sure to check out our guide on installing the MAXIM shift boot collar!
- Thanks for reading!