



# Hybrid Racing Competition Shifter Cable Bushings

Written By: Hybrid Racing



## Step 1 — OEM bushing removal



**i** Since the process to remove the shifter cable bushings will be the same for all cars we will depict that. The method or process to remove the shifter cables from the car will depend on the specific model and application.

**i** You do not need to remove the shifter cables to install the new bushings. However to **MUST** remove them from the transmission cable bracket. Most applications will have spring C clips that hold them in place. Or they will be bolted to the bracket. You must remove them from the bracket so they can be moved freely.

**⚠** If you do not remove them from the OEM brackets, you risk bending and ruining the shifter cable. **BE VERY CAREFUL NOT TO BEND THEM.**

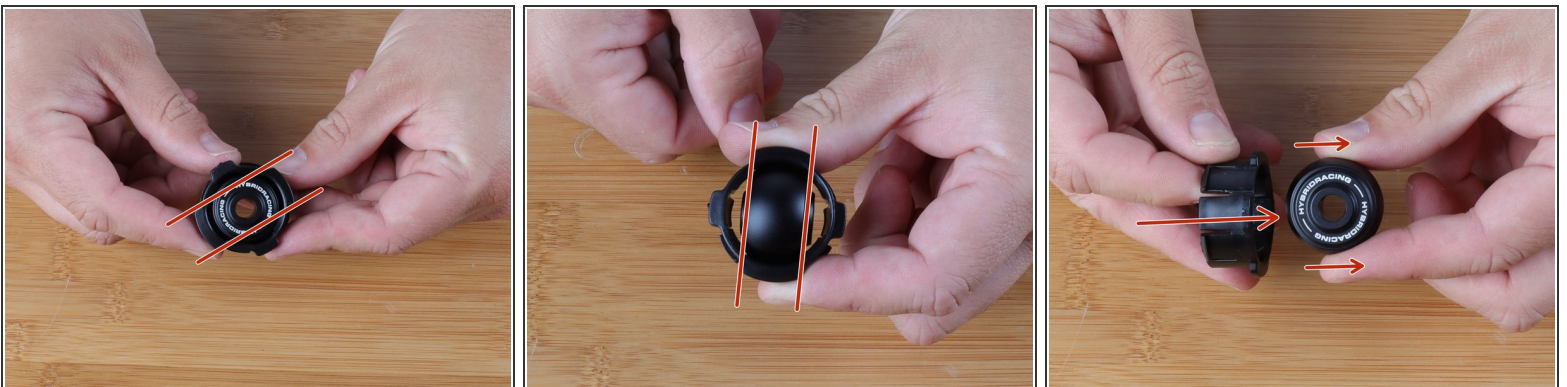
- Begin this process by removing the shifter cables from the transmission bracket. (not shown)
- Use a flat-tipped screwdriver or similar pry tool and pry the OEM rubber bushing out. You can spray lube on the ends to help.

## Step 2 — OEM bushing removal



- Follow the same process and remove the larger bushing.

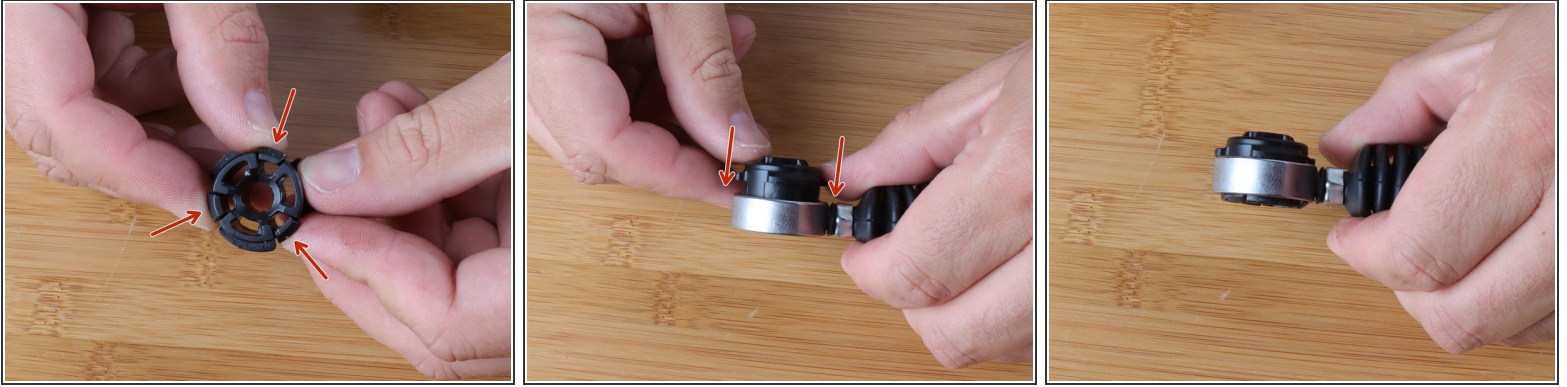
## Step 3 — Separate the HR bushing



- The new Hybrid Racing bushing comes pre-assembled in the package. You must remove the center bushing before installing it in the shifter cable end ring.
- This process is very easy. Hold the bushing with the Hybrid Racing logo facing upwards.
- Use your fingers and rotate the center bushing so that it aligns with the large portions of the delrin ring.
- Push the aluminum bushing outward, separating it from the Delrin case.



## Step 4 — Install small bushing



- The tabs of the Delrin bushing must be compressed so it can clip into the cable end.
- Be sure to align it correctly, squeeze the tabs and slide the bushing into the cable end.
- You will hear the bushing "snap" into place. Once that happens, the installation is complete.

## Step 5 — Install main bushing



- Similar to the previous step, the main bushing has four tabs that must be depressed before sliding it into the cable end.
- Make sure you have the shifter cable facing the correct way. The tabs that get depressed will face down on the shifter cable. So be sure you slide the outer ring through the top section of the cable.
- Slide the ring into place and make sure you hear it snap.

## Step 6 — Add Super Lube



- Even though the bushing and Delrin ring are very smooth, we recommend adding a bit of Super Lube grease with PTFE to the center bushing.
- This allows the bushing to move even smoother. Once applied to the bushing, spread it out evenly.

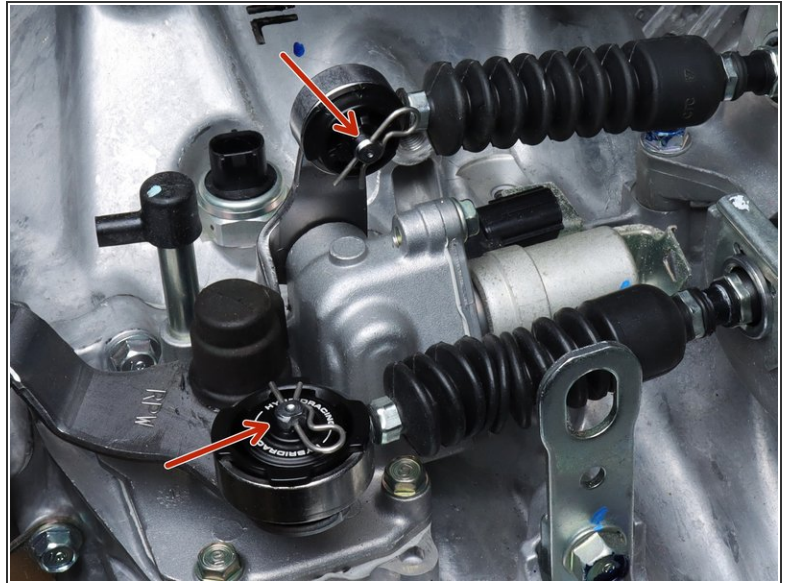
## Step 7 — Insert the center bushing



- Now that the bushing is lubed, you can insert it back into the bushing the same way it was removed.
- Aling the sides of the ring with the bushing and slide it in. Once inserted, rotate it 90\* to lock it in place.
- The bushing should move freely and will not come out.



## Step 8 — Grease and install



- You can now install the shifter cables back on the transmission. Use the supplied great and apply it on the gear selector pin.
- Use the supplied clips to hold the bushings onto the gear selector.
- Shift through all gears and make sure everything feels smooth.
- The installation is complete, now go rip!