



# Shifter Base Bushing Install (06-11 Civic Si)

Written By: Hybrid Racing

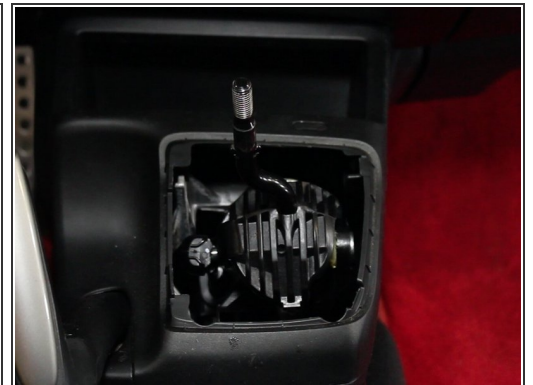


## Step 1 — Shifter Base Bushing Install (06-11 Civic Si)



- Begin by removing the shift knob & locking nut. (if equipped)

## Step 2



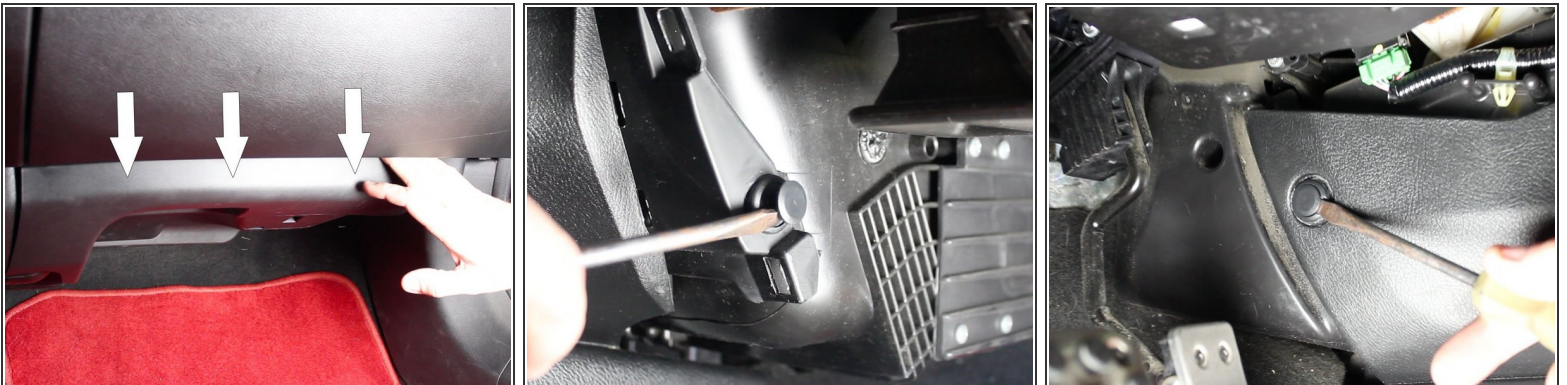
- Gently pry the shift boot console upwards. Remove it completely.

### Step 3



- Gently unsnap the rear section of the console and remove it to expose the shifter assembly.
- Remove the two mounting screws.

### Step 4



- Pull down on the passenger side lower dash panel to expose the center console mounting clips.
  - Remove the mounting clips on both sides of the center console.
- ☑ Be sure to save the clips, you will need them for reassembly.

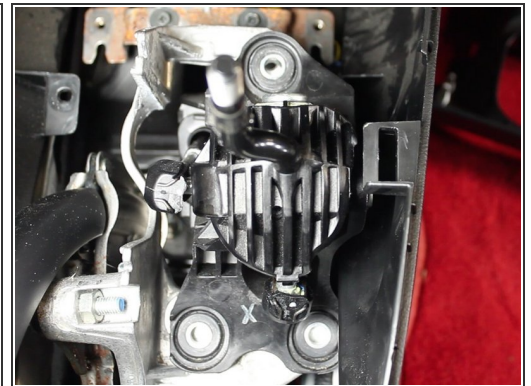
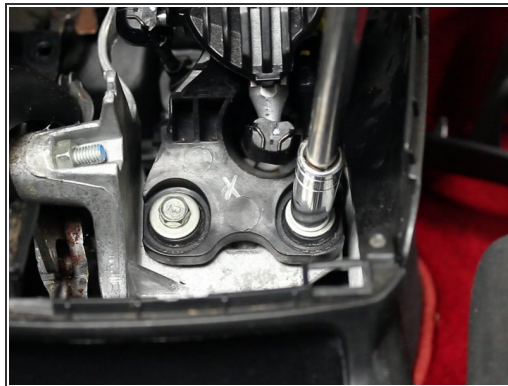
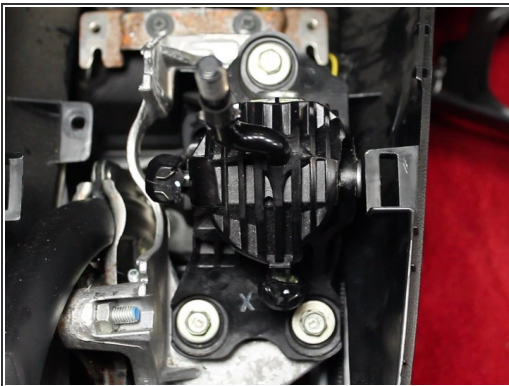


## Step 5



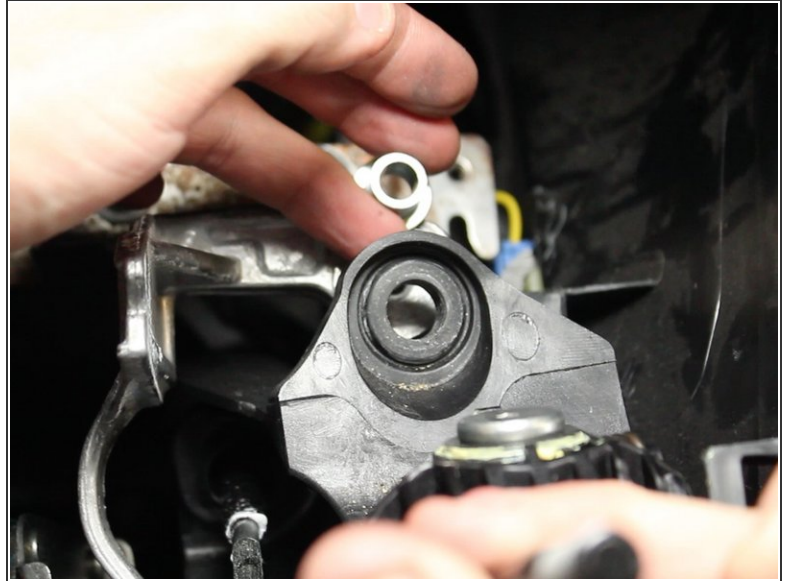
- Remove the two mounting screws located inside of the center console compartment.
- Once all of the screws have been removed, pull the entire console backwards.

## Step 6



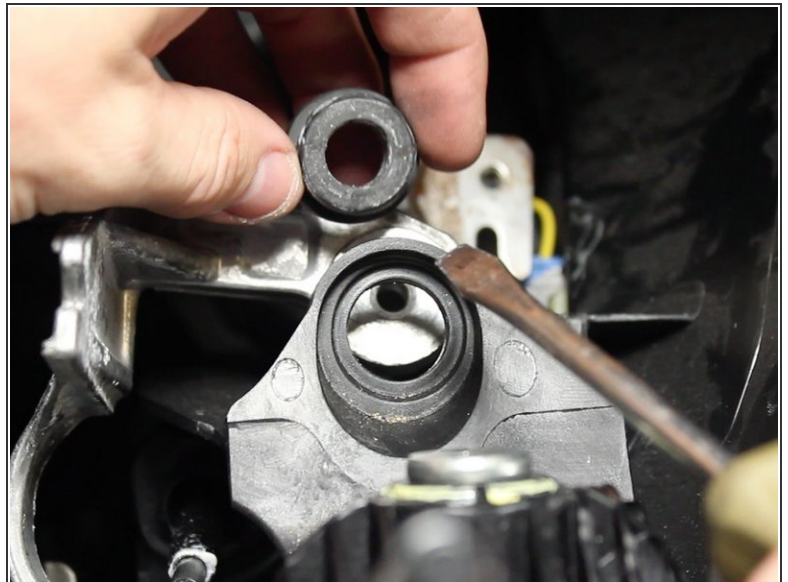
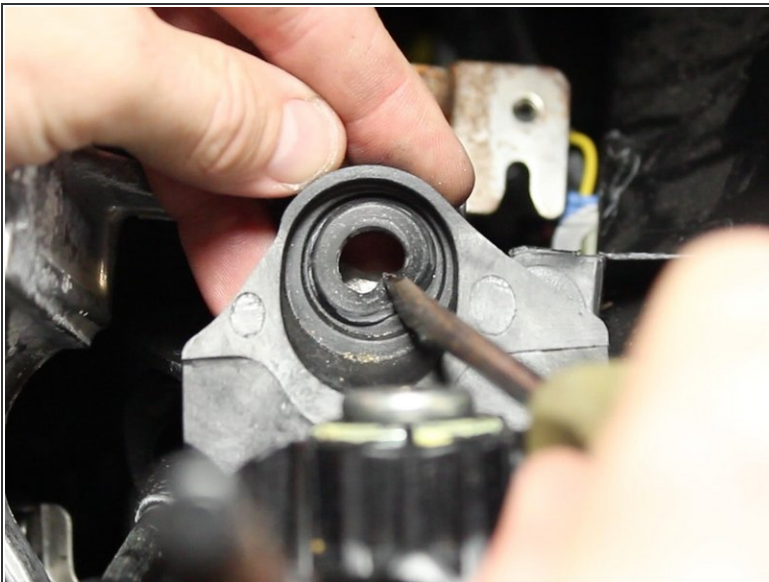
- Once the shifter assembly has been fully exposed, remove the 3 mounting bolts.

## Step 7



- Push the metal base out of the rubber bushing.

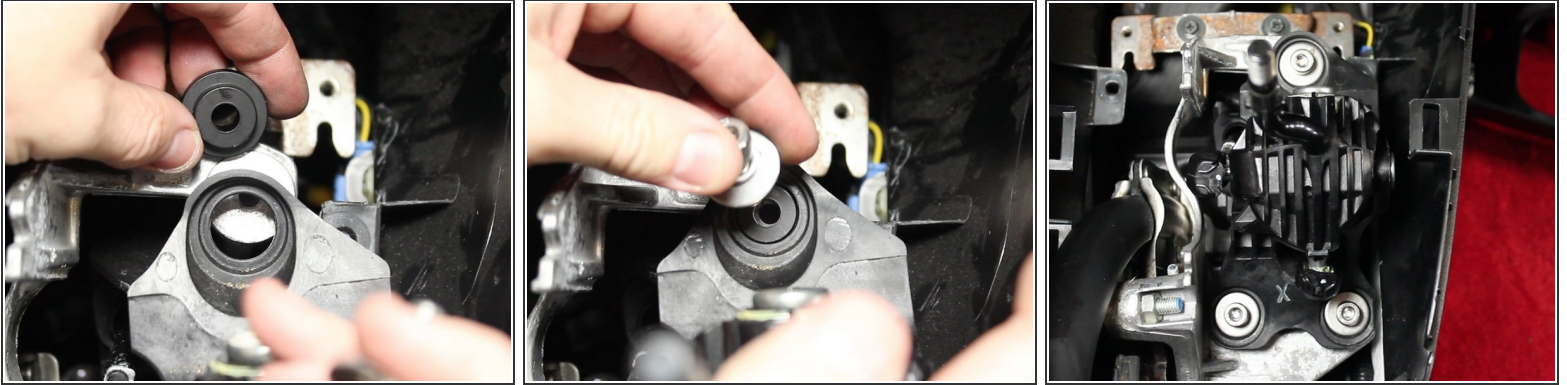
## Step 8



- Remove the rubber insert.



## Step 9



- Install the aluminum base bushing using the supplied hardware.
- Re-assembly is the reversal of removal. Follow this guide in reverse to finish the job!